

Pandemonium

The Fierce and Wrathful
in Asian Art



Statement

Throughout the history of Asia's artistic traditions there have been consistent depictions of thrilling and fearsome individuals that have populated the social imagination of cultures from every region of the continent. Artisans from Japan, China, India, Tibet, Nepal, and across Southeast Asia have portrayed such beings as dreadful, awesome, sometimes monstrous, and always emotionally expressive. In correspondence with the prevalence of alarming and destructive contemporary events occurring in the form of military aggression, global pandemic, and discriminatory violence, *Pandemonium – The Fierce and Wrathful in Asian Art* presents an exhibition of nearly fifty pieces held in the collection of the National Museum of Asian Art (NMAA).

These imposing figures have been realized through a wide range of different materials and processes including stone and wood carving, bronze casting, ceramic, ink drawing, painting, and others that collectively represent a broad range of artistic traditions from across the continent. While typically monstrous or intimidating in appearance, many of the figures presented in this exhibition were guardians of palaces, villages, and homes who may have been sympathetic to the political, social, or religious traditions of the region. As such, they were revered as powerful protectors of both kings and common persons alike. (cont.)

Statement (cont.)

In the traditional performative arts across Asia, including theater, dance, and music, fierce and wrathful beings are often presented as an indispensable component of mythical and literary narratives expressed. This exhibition includes video presentations and live performances of traditional theater, dance, and music performances including Tibetan Buddhist ritual orchestra and dance and Japanese taiko drumming, among others. These align with the exhibit theme and create a more multimodal/multi-sensorial experience while serving to inform viewers that these traditions—in alignment with the underlying exhibition theme—are still vital in the cultural contexts from which the collection objects are representative of.

While this theme has been surveyed in the realm of Tibetan Buddhism, an entire Pan-Asian exhibit is unique, having the inherent potential to display both similarities and continuities as well as distinctive artistic expressions across the continent. This exhibition invites audiences to consider what such fierce and wrathful artwork and performances represent about this pervasive aspect of the human condition as well as how, similar to many of the great guardians displayed, might present-day societies harness these emotions to better safeguard their collective communities.

Pandemonium – The Fierce and Wrathful in Asian Art will be on view in the NMAA's Freer Gallery of Art for five months beginning in May 2023.

Pandemonium

The Fierce and Wrathful
in Asian Art

Checklist





Detail: A dark, fierce Buddhist sculpture, likely a deity or guardian figure, with a lion's head on top. The figure has a dark, almost black face with intense, white eyes and a wide, open mouth showing teeth. The figure's arms are raised in a fist, and it wears gold jewelry, including bracelets and armlets. The sculpture is set against a black background.









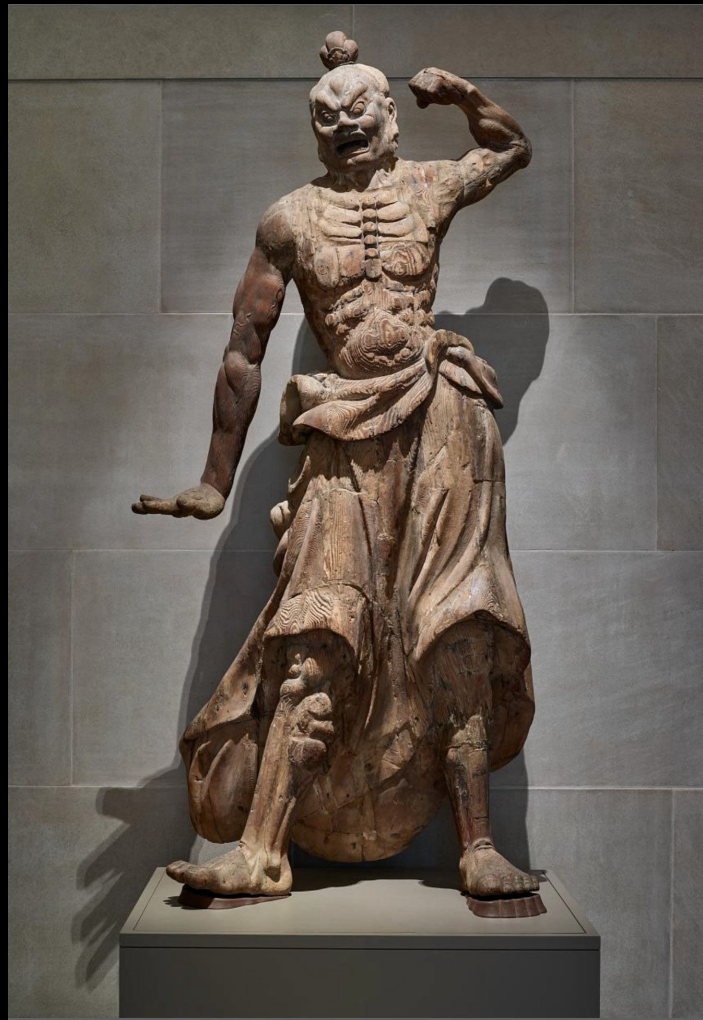




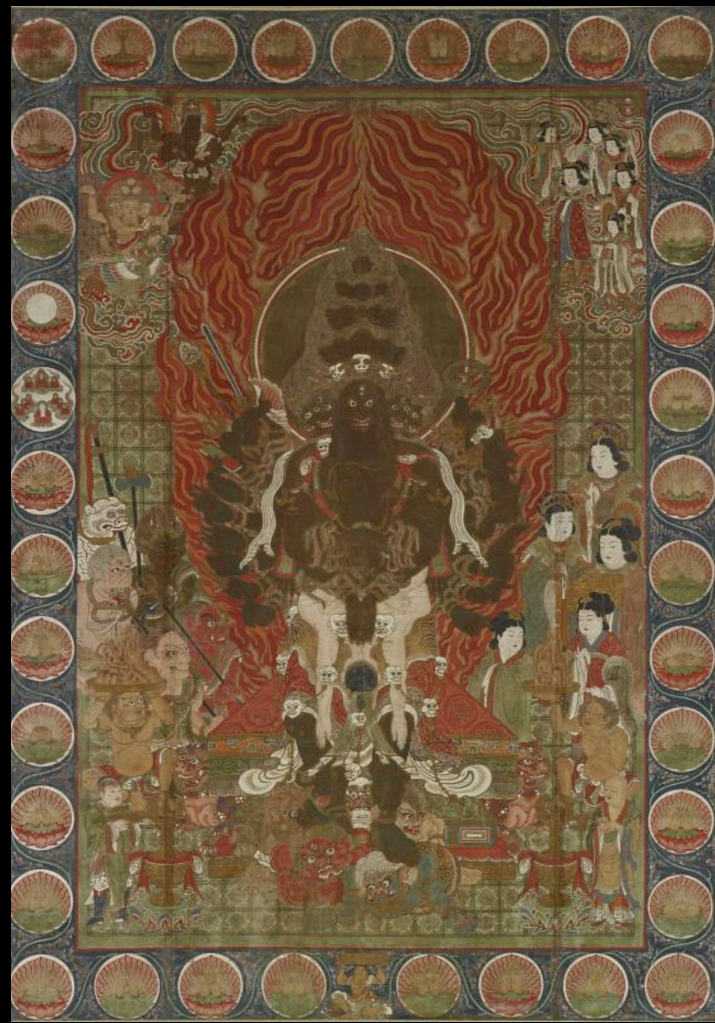


西曆一九五二年





























Pandemonium

The Fierce and Wrathful
in Asian Art

Floor Plan & Budget



NATIONAL MUSEUM of **ASIAN ART**



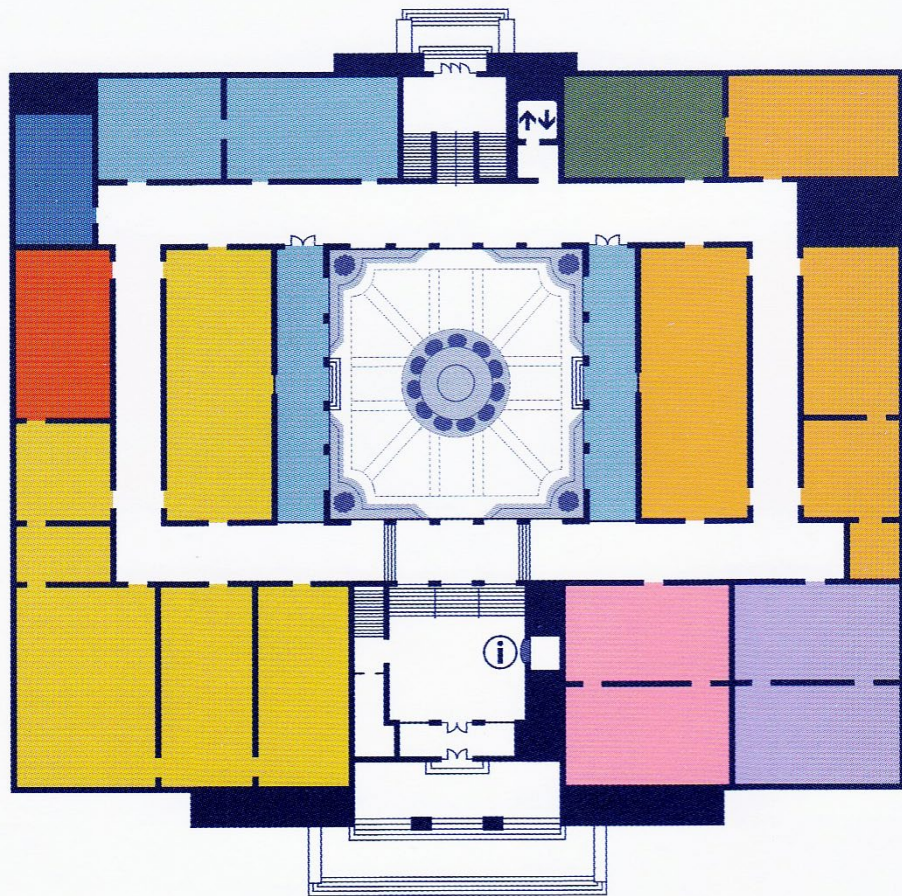
Smithsonian

Freer Gallery of Art

Arthur M. Sackler Gallery

 **Pandemonium – The Fierce and Wrathful in Asian Art**

Independence Avenue entrance



National Mall entrance

Pandemonium – The Fierce and Wrathful in Asian Art

Curator: Jeremie Zulaski

Exhibition Expenses

Curator Honorarium	2000
Artist Fee Budget	
Event Performing Artist Fees	2000 (4 performances @ 500/ each)
Production Budget	1000
Art Shipping	
Art Installation Fees	1000
Hospitality	250
Catalogue Printing	2500
Equipment Rental	250
Supplies	500
Professional Services	500
Total	10000

Pandemonium

The Fierce and Wrathful in Asian Art

Schedule, Events, & Press



Pandemonium – The Fierce and Wrathful in Asian Art

Schedule of Events

MARCH 31 – Tibetan Buddhist Ritual Orchestra

- 6:00pm – PERFORMANCE
- 7:30pm – PANEL DISCUSSION

APRIL 2 – Anime Film Night I

- 6:00pm – FILM

APRIL 1 – Japanese Taiko Drummers

- 6:00pm – PERFORMANCE
- 7:30pm – PANEL DISCUSSION

APRIL 3 – Anime Film Night II

- 6:00pm – FILM